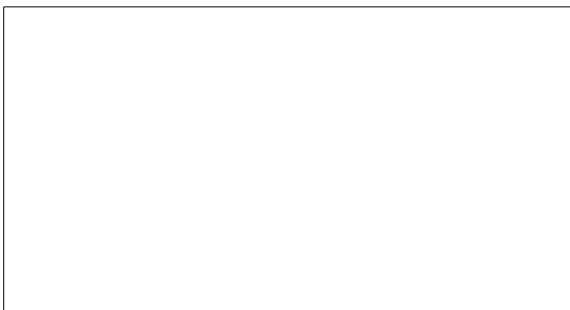
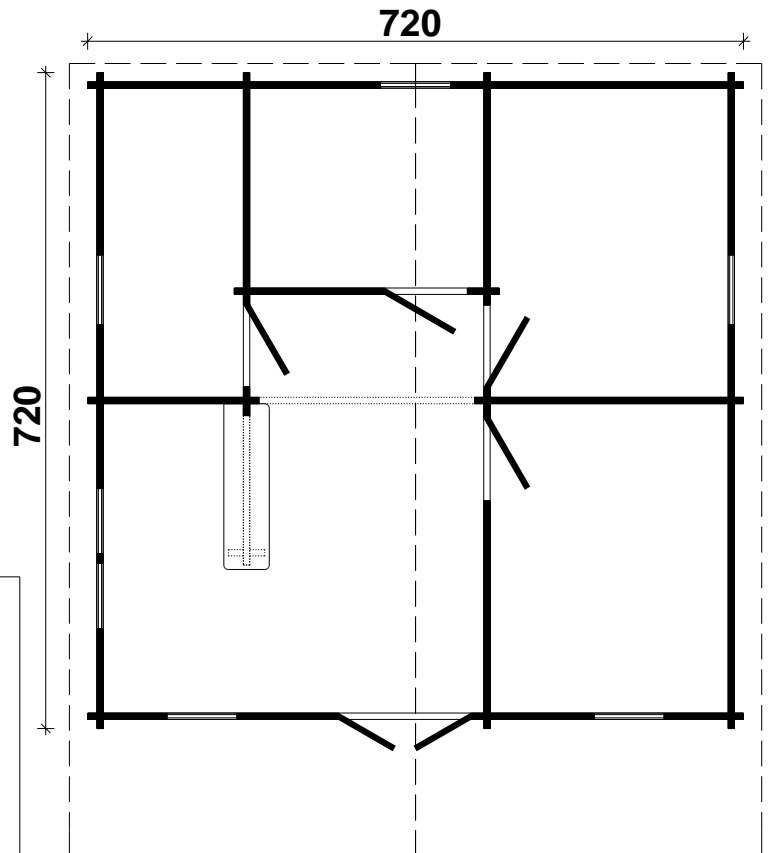
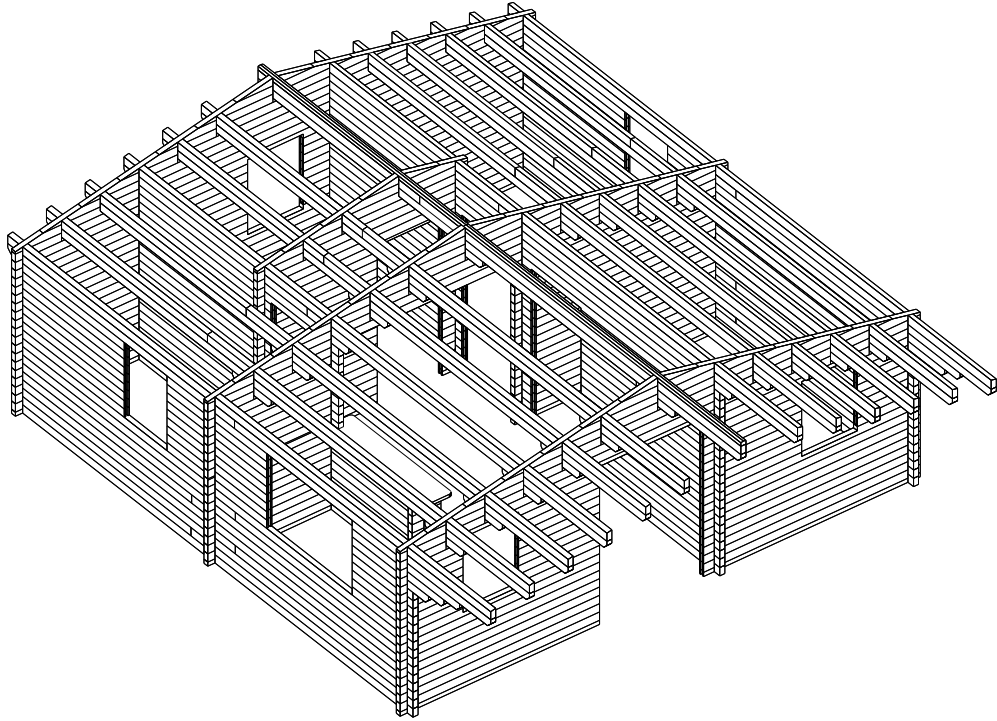


# Palle

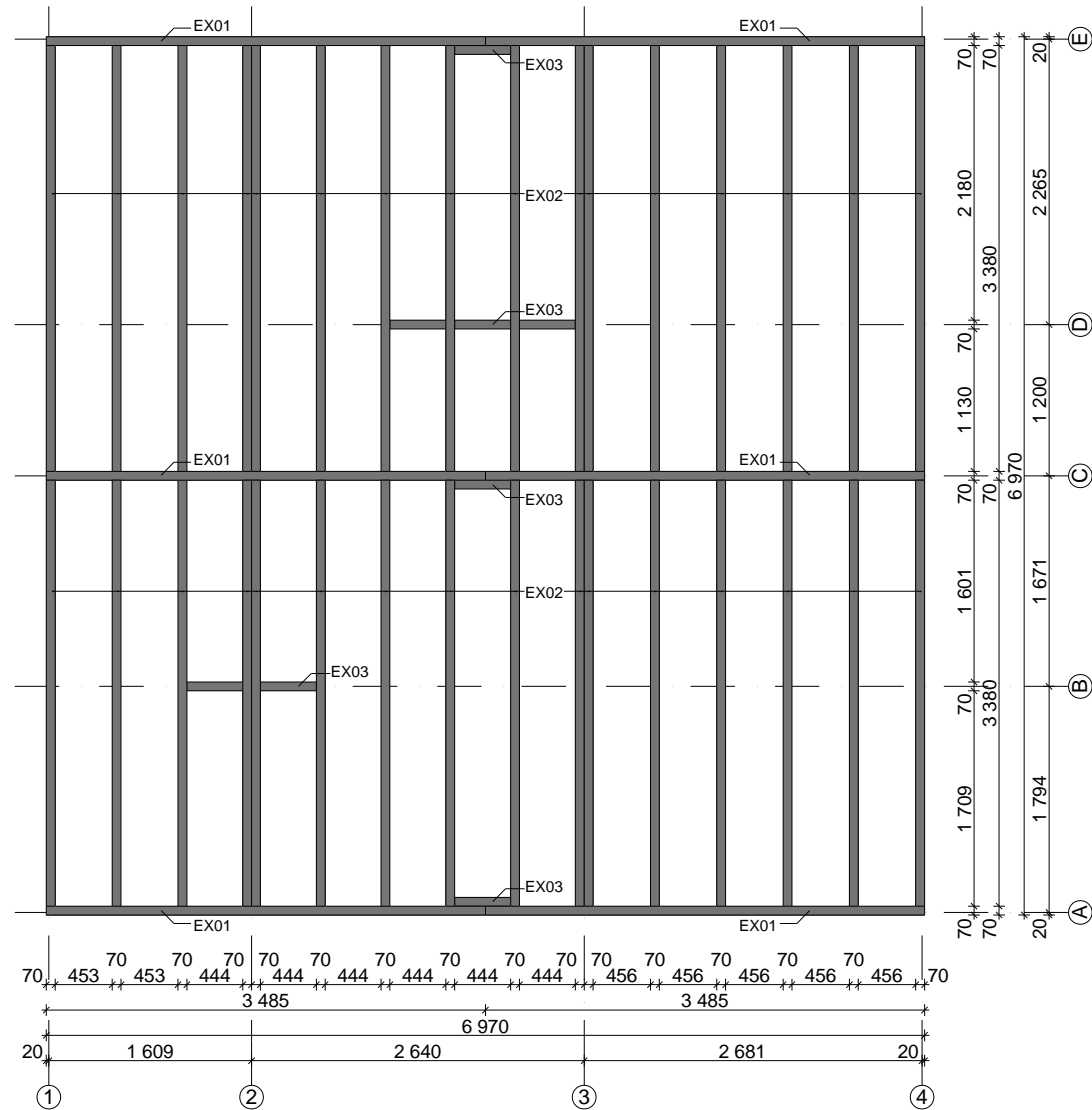
Bohlenaußenmaß (B x T): 720 x 720 cm

Wandaußenmaß: 700 x 700 cm · Bohlenstärke: 70 mm



Achtung : Alle angegebenen Maße sind ca. - Maße !

# Palle 70 mm / 720 x 720 cm - Fundamentplan



# Palle 70 mm / 720 x 720 cm - Wandplan

